

Respite for All Foundation

A Community Response to Dementia



RESPITE FOR ALL *FOUNDATION*



Mission: Inspire, grow, and mentor volunteer-led respite communities inside faith-based and senior organizations.

Vision: A nationwide network where individuals with dementia and their caregivers thrive through community and social connection.

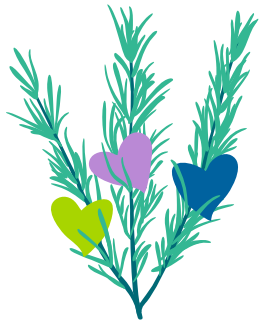
Growth: Inspired, trained, and launched 60 locations in 18 states and growing since 2012 for a 13- year proof of concept.

Respite for All National Network

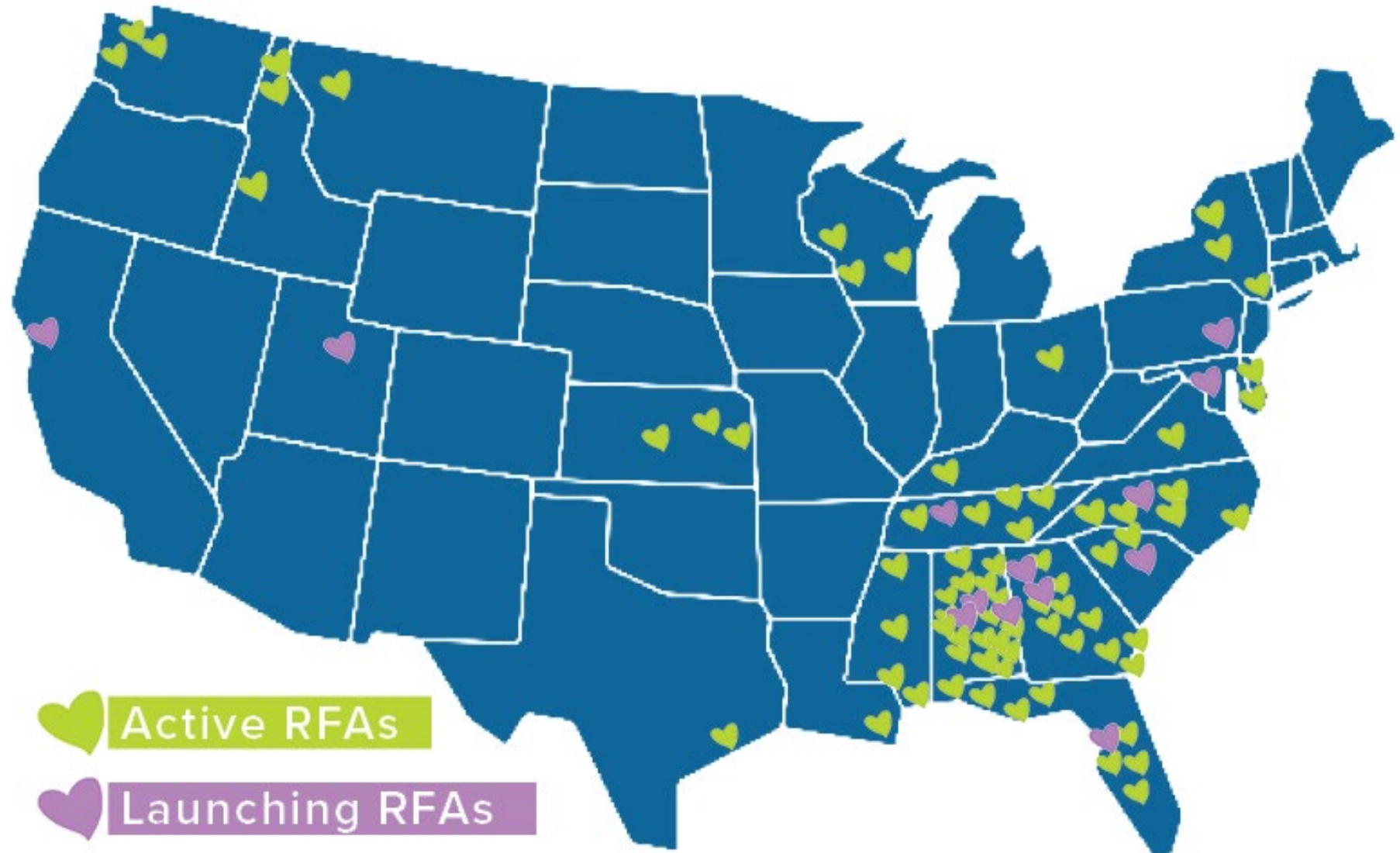
19 States

70+ Communities

12 Denominations



Respite for All
FOUNDATION



DISTINGUISHING *CHARACTERISTICS* of RFA

1. 4 Hour Respite for Care Partners
2. Social Model of Care/ Low Cost
3. Training and Support
4. High Volume Volunteer Engagement (1:1)
5. Offers Purpose for Participants
6. *Everyone does Everything*
7. No Government Grants Needed
8. Sustainability- 92%
9. No One Turned Away



Respite for All
FOUNDATION



THE RFA MODEL



- **At Launch:** RFA provides comprehensive training for vision teams, directors and volunteers for launching a community, volunteer respite
- **Local Programs Implement not Develop-** The 13- year model of RFA is tried and true and means local communities implement rather than dreaming of a model from conception.

RFA KEY COMPONENT- NO LABELS

(NO DIFFERENCE IN A VOLUNTEER AND PARTICIPANT)



Respite for All
FOUNDATION

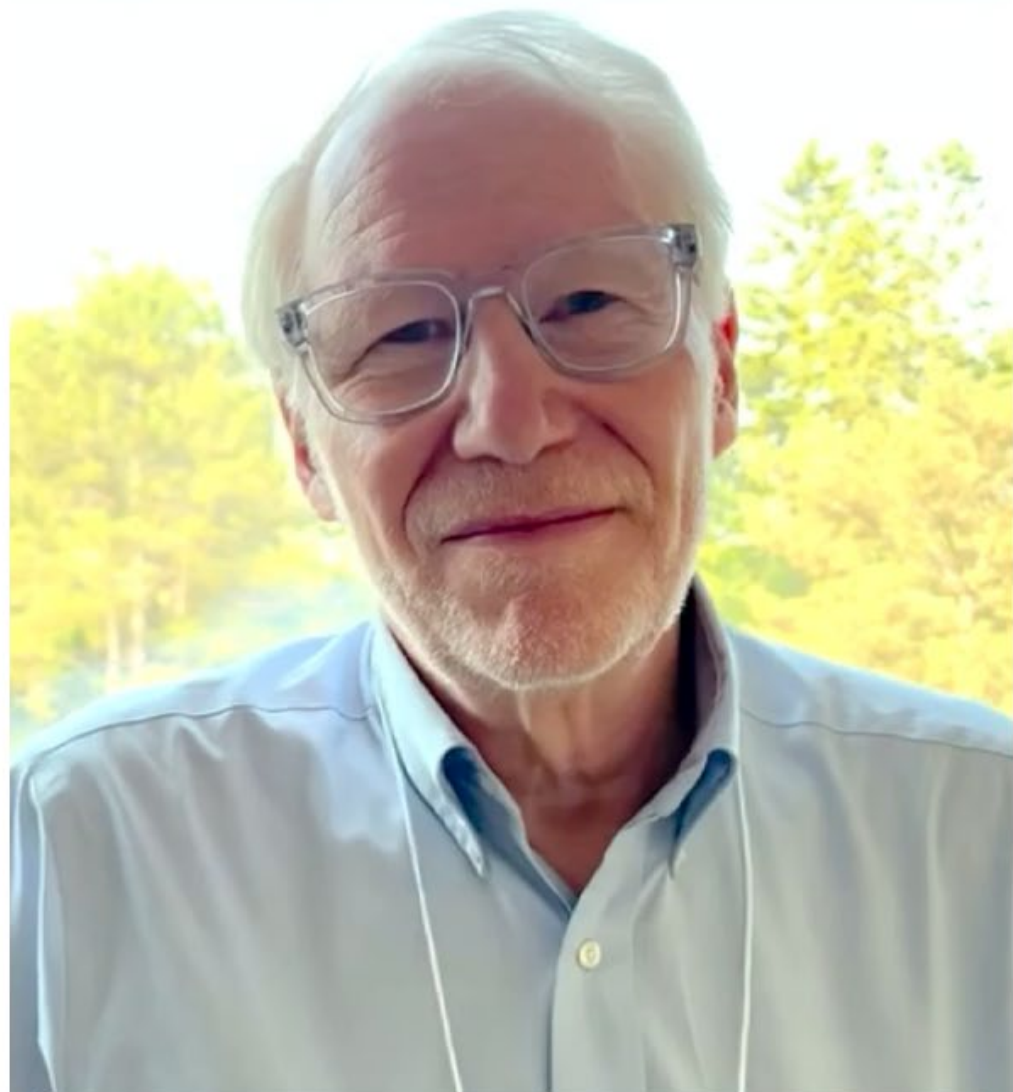




WHY RFA COMMUNITIES ARE SUSTAINABLE

- No Overhead
- Minimal Paid Staff
- Social Program/No Meds
- Revenue from Daily Fees
- Insurance Covered
- Community Partners
- Operational Simplicity





Copyrighted Material
G. ALLEN POWER, M.D.



Dementia Beyond Drugs

CHANGING THE CULTURE OF CARE

Copyrighted Material
Foreword by William H. Thomas, M.D.

LARGE GROUPS- ADDICTIVE HIGH ENERGY

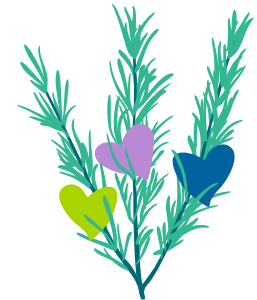




"In 2023, Respite for All (RFA) partnered with Dr. Fayron Epps, founder of the Alter Program, to launch respite programs within the African American community. Dr. Epps, a proud board member of RFA, is a visionary leader in the field of dementia care."



ALTERTM
INSPIRING AND EQUIPPING FAITH COMMUNITIES



Respite for All
FOUNDATION

Respite Launch Process

- 1 Vision Team Zoom
- 2 Evaluate Logistics (Space and Host Organization)
- 3 Evaluate Funding and Costs
- 4 Insurance Coverage/ State Regulations
- 5 Plan Operations/ Volunteer Recruitment
- 6 Develop Program's Marketing Plan



Respite for All Ongoing Support

MONTHLY DIRECTOR CALLS

- Fundraising/ Grantwriting
- Dementia Education
- Activity Ideas
- Volunteer Recruitment/ Development

ANNUAL RFA TRAINING

- National Dementia Speakers
- Networking with other programs
- Problem Solving

ONE ON ONE COACHING

- Onboarding New Director
- Insurance/ Budgeting Recommendations
- Director/ Clergy/ Board Support

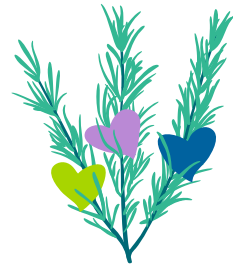


Community Funding Partnerships

Host Organization

Civic- Rotary

Family Businesses



Respite for All
FOUNDATION



Local Churches

Donors Affected by
Dementia

Aging Consortiums

DATA AND RESEARCH



Strong Outcomes & Early Research Alignment

- Demonstrated outcomes:
 - Reduced caregiver stress
 - Increased social engagement
 - Improved quality of life
- Partnership with **Georgia State University Gerontology Institute** to build formal data systems



👉 **Takeaway:** Moving from **anecdotal success to evidence-backed impact**

MILESTONES AND IMPACT



- Highlighted by **NADRC** in 3 national webinars in 12 years
- Highlighted in **Kiplinger's Retirement Magazine** for quality alternative to long-term care
- Awarded **Most Innovative Dementia Program** by Alzheimer's Foundation of America in 2021
- Highlighted in **AARP Respite Guide 2024**



Kiplinger's
RETIREMENT REPORT
Your Guide to a Richer Retirement
VOLUME 28 | NUMBER 3 | MARCH 2021 | \$5.00



A COVID Storm Hits Senior Living

whether to proceed. The pandemic has forced the community to curtail group activities and socializing. The closure of places where residents congregate and restrictions on interaction would diminish the very things they love most about the senior living community: the opportunity to connect with old friends and make new ones, to do things and go places together. "Although I realize it's temporary, the looming question in my mind is what is the new normal after this is all over?" says Jack. When their apartment is ready, probably in mid-March, the DeVines will have 90 days to execute their contract

IN THIS ISSUE

- CONSUMER SPENDING
 - 8 | The Art of Getting Discounts
 - 10 | Information to Act On
 - 12 | Your Questions Answered
- MANAGING YOUR FINANCES
 - 14 | Financial Checkups
 - 16 | Insuring an RV
 - 17 | RV Financing
- TAXES
 - 18 | 2020 Returns
- INVESTING
 - 20 | Bonds vs. Bond Funds
- RETIREMENT LIVING
 - 21 | Volunteering Virtually

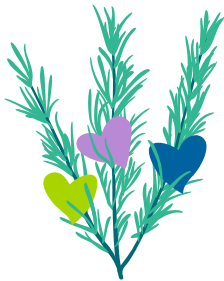
THE RFA RELATIONSHIP *WITH COMMUNITIES*



1. We Do Not Depend on Medical Reimbursement
2. No Cost or Annual Fee to be Part of RFA Network
3. Provides Multiple Examples of Business Formats to Suit Local Orgs
4. No RFA Community is Legally Tied to RFA or Others in Network
5. One Part Time Paid Leader Creates Local Ownership
6. Peer Network + Training Prevent Failure
7. Thirteen Year Proven Infrastructure (90% + Sustainability Rate)



7 Locations State of Florida



Respite for All
FOUNDATION



*Respite for All
Alabama Model State*

17 Locations

7 Birmingham

500+ Care Partners

500+ PLWD

700 Volunteers



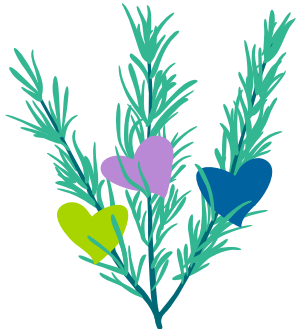
Find us on Facebook:

RESPITE FOR ALL FOUNDATION

Contact: Daphne Johnston

Webpage: www.RespiteForAll.org

Email: Daphne@respitforall.org



Respite for All
F O U N D A T I O N

